

## Getting started with Crickets and Interwrite Response (5.00.0143) for PowerPoint Users

Daniela Gachago, July 2008

### 1. Creating Response questions in your PPT presentation

If you have used Interwrite PRS before, then you will find that creating questions in PowerPoint has not changed. As before, you need to register the **PPT add-in** (under Interwrite Learning/Interwrite Response/Install support for PPT). You still prepare your questions in PowerPoint and then “**add new question**”. You can also run PowerPoint presentations prepared with a previous version of the software using Response (although a run-through before the actual delivery of your lecture is very advisable).



Image 1: creating a new Response question

A few things to consider:

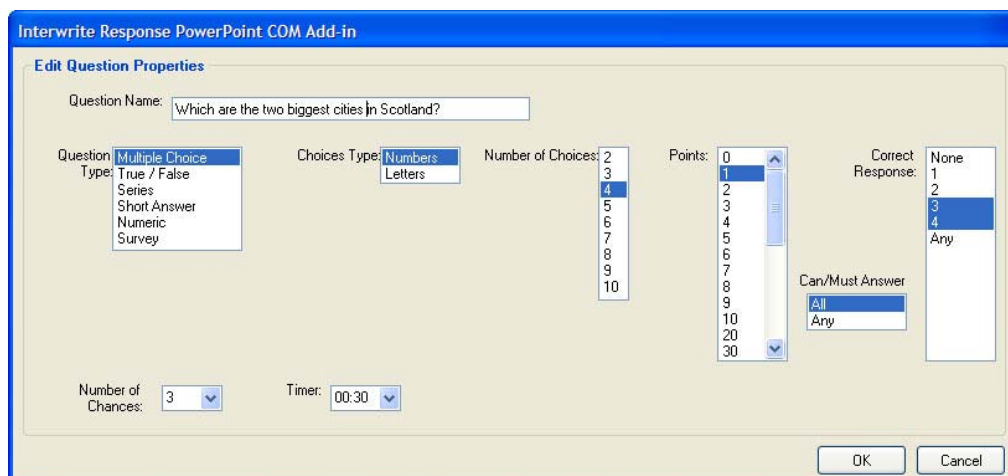
- Although Response offers a variety of question types, when using Cricket handsets only two are applicable: **Multiple Choice and True/False** questions.
- Cricket handsets have 8 buttons: 1A-6 and T/F, giving response choices 1 to 6, A to E and T and F. So, you can have a **maximum of 8 answers** (1-6 and T/F).

What is your favourite ice cream flavour?

1. Vanilla
2. Chocolate
3. Strawberry
4. Kiwi
5. Hazelnut
6. Rasperry
- T. Stracciatella
- F. Banana

Image 2: question with 8 answers

- You can now define **more than 1 one correct answer** (by highlighting more than one answer under correct response). The system will ask you whether students must answer all or any of the correct answers for a correct answer. With Crickets students will still only be able to submit one answer, so select **any of the correct answers**.



If you need any help with clickers please contact the CSE clicker team ([jon.jack@ed.ac.uk](mailto:jon.jack@ed.ac.uk)) or visit our website: <http://www.scieng.ed.ac.uk/ltstrategy/clickers.html>

Image 3: Selecting more than one correct answer

## 2. Starting a session

As before, you start a session from within PowerPoint by selecting the presentation view. If you are running an actual session, ensure that the receiver is plugged in properly. You should again see the window asking you whether or not you would like to activate the Response session – click yes.

Now a few differences to the previous software version:

- Response should be launched (unless you have opened the software beforehand).
- Response will first **search for a receiver** and show you how many receivers were detected. If no receivers are detected, close the software, pull the receiver out, plug it in again and restart the process. If it is still not detected, you might not have to appropriate receiver drivers installed on your computer. You can run the presentation without a receiver to test your presentation.
- If the software can detect a receiver, it will open the “**New Session**” window. Here you can rename your session and select a class. There is a default class called “My Class”. Select this one. Per default this class is set up to accept responses from all possible handsets (IR, PRS-RF/ Virtual Clicker, Crickets). We would advise you to change those settings and **deselect all handsets apart from the Crickets**. (See 3. **Reviewing a session** for instructions on how to change class settings).

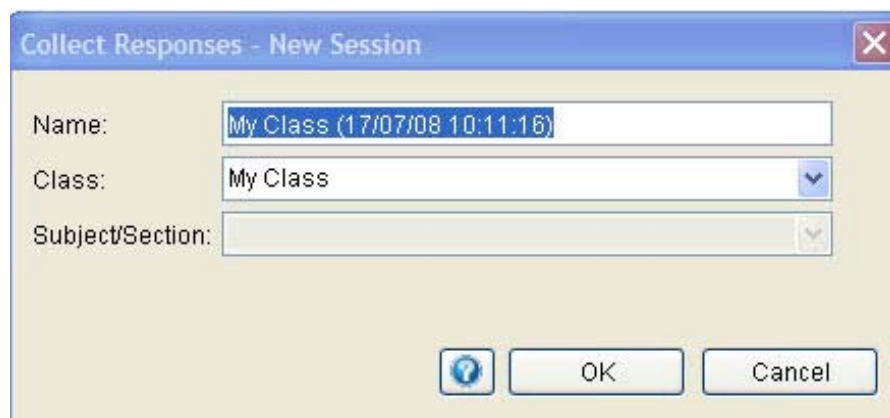


Image 4: Renaming session and selecting class

- Your presentation will open up. The **Session Status bar** is minimized and will only appear in full when the system detects a Response question.






Image 5: Session Status bar

- You can see the **channel** the system has allocated to you, here channel <51>, and the number of students who have registered to the channel (currently 2).

If you need any help with clickers please contact the CSE clicker team ([jon.jack@ed.ac.uk](mailto:jon.jack@ed.ac.uk)) or visit our website: <http://www.scieng.ed.ac.uk/ltstrategy/clickers.html>

Ask your students to register to the channel by switching on their handsets and typing in the channel number, e.g. 51. They will get a confirmation for successful registration (green light under tick sign on handset). They will remain connected to the channel for one hour (as long as you don't close your session). In case their connection gets lost, students have to switch off their handset, switch it on again and re-register to the channel. If you are seeing more than one channel number, e.g. <7,45> it means that you haven't deselected the PRS-RF handset in your class settings. The first single-digit or letter is the channel allocated to the PRS-RF handset and the second, two-digit number is the channel allocated to the Crickets.

- You can now **start / pause / stop** your question exactly as with previous versions of the software. You will see the number of votes received.
- If you re-run a question (**re-voting**), the system will automatically save the data of all the questions asked.
- The result screen has a few new features: you can jump directly (without leaving the session) to:

- o more detailed information on how students voted (  ) including the possibility of changing question and answers by clicking on "question name"
- o change chart settings using these three buttons (  )
- o slice question data or compare question results (  ), e.g. when re-voting on a question. Although data slicing works best for questions authored in the Response question editor.

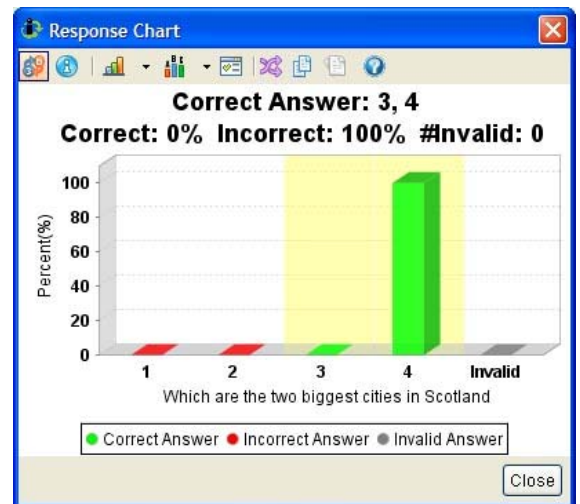
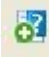
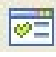



Image 6: result screen

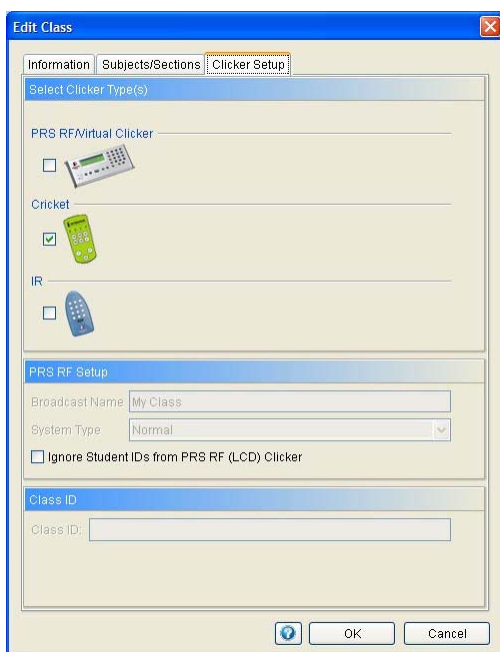
- You can also add an "on the fly" question into your PowerPoint presentation, by selecting the "**insert question icon**" on the voting bar (  ), but be careful with templates, you need a plain white background, to insert a question.
- To change general settings of your Response session, e.g. automatically starting or advancing questions or automatically showing charts, select the "**Preference**" icon (  ) on the Session Status bar.
- To end a session close the voting bar (  ). Select end the class. All clickers will be disconnected. If you want to run a new session, students will have to reconnect to the channel (by switching handset off, on again and then typing in channel number).

### 3. Reviewing a session

Response has improved reviewing and reporting functionalities, which you can access under “Manage my Data”. This section is divided into:

- Classes (access to classes, rosters, sessions, attendance and gradebook)
- Lessons (creating questions using the Response question editor)
- Reports (pdf reports by session, lesson, roster, attendance, gradebook)

Here you can e.g. change your class settings to deselect handset types that you don't need, set up a class roster (if you are not running an anonymous class) and review your sessions.



To **change your class settings**, select “Manage My Data”, “Classes” and the class you want to edit (most probably the default class “My Class”). Click on “Edit Class” and select “**Clicker Setup**”.

Deselect PRS-RF/Virtual Clicker and IR, so that only **Cricket** remains selected. Click OK.

If you are trying to review a session and you don't get any results, but an error message: “No data was returned for this report”, you need to **populate your class roster**, when you have finished the session. Go to Manage My Data, Classes, My Class. Select **roster**. Check if there is any data under pending list (lower part of the right pane). If yes, either click on “**Move Selected Students To The Official Roster**” or to move all records select “**Move All Students To Official Roster**”.

This should move the data to the upper part of the right pane into the roster. You should now be able to review a session.

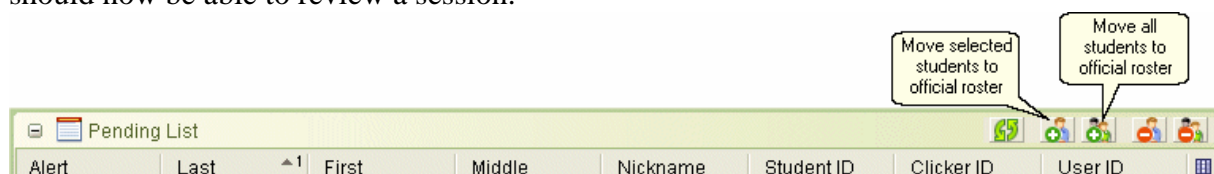


Image 8: moving pending students to official roster

#### More information on clickers at the University of Edinburgh is available:

- on the College of Science of Engineering (CSE) Clicker Website: <http://www.scieng.ed.ac.uk/ltstrategy/clickers.html>
- on the IS eLearning EVS Website: <http://www.elearn.malts.ed.ac.uk/services/CAA/PRS.phtml>
- through the CSE clicker team ([jon.jack@ed.ac.uk](mailto:jon.jack@ed.ac.uk))
- from the IS eLearning team ([elearnhelp@ed.ac.uk](mailto:elearnhelp@ed.ac.uk))

If you need any help with clickers please contact the CSE clicker team ([jon.jack@ed.ac.uk](mailto:jon.jack@ed.ac.uk)) or visit our website: <http://www.scieng.ed.ac.uk/ltstrategy/clickers.html>